

# SWAGE TOOLING

- Single Swage installation in most applications
- Operates in all weather and ground conditions
- Consistent, repeatable, measurable performance
- Hydraulically operated
- Interchangeable heads for various applications
- Complete rental kits and accessories available

## CONNECT WITH THE BEST

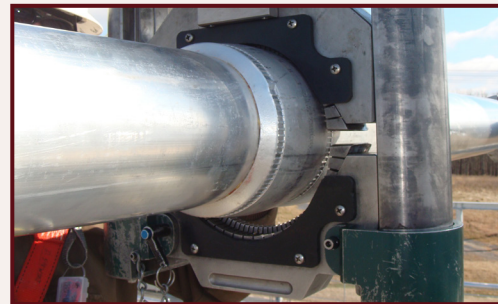
DMC Power connectors and Swage tools are proudly made in the U.S.A. and tested to exceed industry standards to provide you with the highest quality bus, cable, grounding, EHV and transmission connections.

Special attention has been paid to safety, speed, reliability and ease of use. We're confident that once you experience the benefits of Swaging you'll never go back to your old installation method again. The best part of the Swage System is that anyone can use our tools. With on-site training and by following the simple, safe, operation, safety and maintenance steps you will:

- **Increase installation speed**
- **Raise safety standards**
- **Reduce downtime**
- **Operate in all weather conditions**
- **Lower the total cost of your project**

Complete training, designed to teach personnel how to properly install DMC Power Connectors and operate DMC Power Swage Tools, is provided at no additional cost.

Contact your Territory Manager or DMC Power directly at **888-SWAGE-NOW** to schedule your team's training today!



## WARRANTY INFORMATION

Our Swage tools are a highly engineered pieces of equipment that have been designed, manufactured and tested to be used as a mate with only DMC Power connectors, completing our patented "Swage System". Everything we do in regards to material selection, manufacturing processes, testing and certification has come from decades of experience and independent testing of our system as a mate.

If DMC Power Swage Tools are not used with DMC Power connectors, you are creating a safety and quality issue that immediately voids all warranties or guarantees, implied or otherwise, on the tool and the connection being made. Any and all liabilities of the tool and connection will be the sole responsibility of the customer/end user.

DMC Power agrees to repair or replace, free of charge, any Yoke, Die Block or Power Unit manufactured by DMC Power which proves to be defective due to faulty workmanship or materials within 1 year of shipment from the factory. Dies, Endplates and Pumps have a 90 day warranty. This will be honored provided written notice is received by the company immediately following the discovery of such defect.

DMC Power shall have no liability for damages or delays resulting from the use of alternative connectors, any unauthorized substitute service parts or unauthorized repairs not performed by DMC Power. These actions will immediately void the warranty and may cause the equipment to perform in an unsatisfactory or unsafe manner.



## 360° SWAGING POWER

### SUPERIOR QUALITY

Constructed from solid material for maximum strength and reliability

### SAVES TIME

Consistently install connectors faster than other methods

### ALL-WEATHER

Operates in freezing temperatures, wind, snow, rain & heat

### IMPROVES SAFETY

No open flames or special safety equipment required

### LOWER TOTAL PROJECT COST

Reduce labor expenses, set-up costs and downtime

### INSPECTABLE QUALITY

Easily and immediately verify Swage with "Go/No-Go" Gauge

### EASY TO USE

On-site training gets crews Swaging in as little as 15 minutes

### CONSISTENT RESULTS

One button operation produces quick and repeatable results

### EASY MAINTENANCE

Few moving parts and easy die removal for cleaning and lubrication

### MULTI-PURPOSE

Single tool can be used for various bus, cable, grounding and full tensions applications



**Contact DMC POWER to learn more about PURCHASE and RENTAL options**



### KIT INCLUDES

- Swage Tool
- Die Set
- Hydraulic Pump
- Hydraulic Hose
- Inspection Gauge
- Swage Lube
- Carrying Case

SWAGE TOOL OVERVIEW



**DLT45 / DP45****45 POWER UNIT**

360° Power

**45 Tons**

Head Assembly Weight

**7+ lbs**

Power Unit Weight

**17 lbs**

Ground OD

**1" - 2 1/4"**

Cable OD

**1/2" - 2 1/4"**

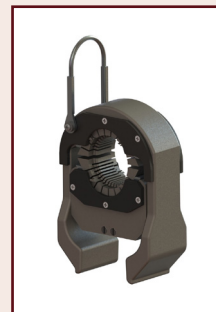
Full Tension OD

**1 1/4" - 2 1/4"**

DLT45 Power Unit  
with 1-1/2" Head Assembly

**TOOLING  
TIPS**

**Buy or Rent Interchangeable Head Assemblies  
and Inspection Gauges to Increase Tool Flexibility &  
Accelerate Time Savings!**



BUS			
BUS O.D.	HEAD ASSEMBLY	INSPECTION GAUGE	POWER UNIT
1"	DLT57PLHA0016	PLKIG2000-16	DLT58MAPW0000
1 - 1/2"	DLT57PLHA0024	PLKIG2000-24	
2"	DLT57PLHA0032	PLKIG2000-32	
2 - 1/2"	DLT57PLHA0040	PLKIG2000-40	
3"	DLT57PLHA0048	PLKIG2000-48	
1"	DLT65PLHA0016	PLKIG2000-16	DLT65MAPW0000
1 - 1/2"	DLT65PLHA0024	PLKIG2000-24	
2"	DLT65PLHA0032	PLKIG2000-32	
2 - 1/2"	DLT65PLHA0040	PLKIG2000-40	
3"	DLT65PLHA0048	PLKIG2000-48	
3 - 1/2"	DLT65PLHA0056	PLKIG2000-56	
4"	DLT65PLHA0064	PLKIG2000-64	
5"	DLT86PLHA0080	PLKIG2000-80	DLT86MAPW0000
6"	PLT115PLTA0000	PLKIG2000-96	PLT115MAPE1000

CABLE AND GROUND			
FITTING O.D.	HEAD ASSEMBLY	INSPECTION GAUGE	POWER UNIT
1/2"	DLT45CLHA00004	DLT45CLIG00004 (C) GCIG200-02G (G)	DLT45MAPW0000
3/4"	DLT45CLHA00010	DLT45CLIG00010	
1"	DLT45CLHA002500	DLT45CLIG02500	
1 - 1/4"	DLT45CLHA03975	DLT45CLIG03975 (C) GCIG200-03975 (G)	
1 - 1/2"	DLT45CLHA05565	DLT45CLIG05565 (C) GCIG200-05565 (G)	
1 - 3/4"	DLT45CLHA07155	DLT45CLIG07155	
1 - 7/8"	DLT45CLHA08745	DLT45CLIG08745 (C) GCIG200-08745 (G)	
2"	DLT45CLHA11130	DLT45CLIG11130 (C) GCIG200-11130 (G)	
2 - 1/4"	DLT45CLHA15900	DLT45CLIG15900 (C) GCIG200-15900 (G)	
2 - 3/4"	DLT58CLHA25000	DLT45CLIG25000	DLT58MAPW0000
3 - 1/4"	DLT58CLHA40000	DLT45CLIG40000	

## DLT58 / DP58

### 58 POWER UNIT

360° Power <b>58 Tons</b>	Head Assembly Weight <b>18+ lbs</b>	Power Unit Weight <b>26 lbs</b>
Bus OD <b>1" - 3"</b>	Cable OD <b>2¾"</b>	Full Tension OD <b>2" - 2¾"</b>



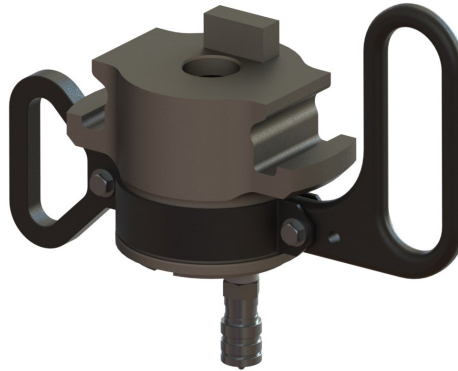
DLT58 Power Unit  
with 3" Head Assembly

BUS, CABLE & FULL TENSION

## DLT65

### 65 POWER UNIT

360° Power <b>65 Tons</b>	Head Assembly Weight <b>23+ lbs</b>	Power Unit Weight <b>28 lbs</b>
Bus OD <b>1" - 4"</b>		



DLT65 Power Unit  
with 4" Head Assembly

BUS

## DP85 (Full Tension)

## DLT86 (5" Bus)

### 85 & 86 POWER UNITS

360° Power <b>85/86 Tons</b>	Head Assembly Weight <b>24+ lbs</b>	Power Unit Weight <b>43+ lbs</b>
Bus OD <b>5"</b>	Full Tension OD <b>5/8" - 2¾"</b>	



DP85 Power Unit with 2"  
Full Tension Head Assembly



DLT86 Power Unit  
with 5" Head Assembly

BUS & FULL TENSION

**PLT115****6" BUS TOOL**

360° Power

**115 Tons**

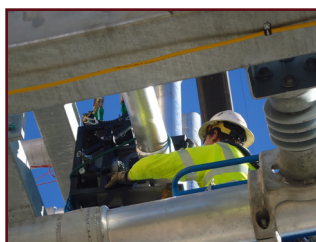
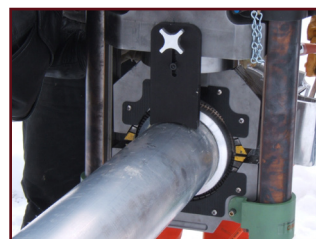
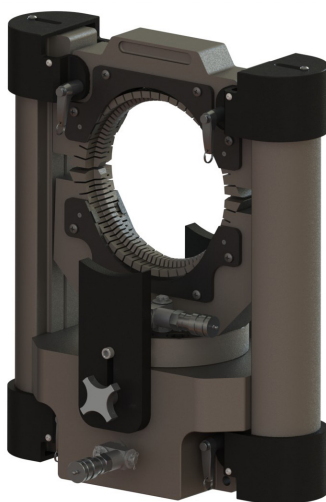
Head Assembly Weight

**500 lbs**

Bus OD

**6"**

- 2-Stage Pump Required (PLT115PLPE1001) – see next page
- Includes 5-Point lifting cradle for easy installation at any angle

**TOOLING TIPS**

## DMC Power Offers Three Great Options To Get You Started Swaging:

**1****PURCHASE**

Perfect choice for users with:

- Continuous projects
- Higher volume connections
- Unpredictable weather
- Tool maintenance personnel

**2****RENTAL**

Great option for:

- Low volume projects
- Budget conscious users
- Expanding Swage tool potential (rent Head Assemblies)
- Emergency maintenance/repairs
- Accelerated time savings (Rent multiple tools)
- Short staffed/welders not available

**3****TRIAL**

Whether you're brand new to Swaging or are already a satisfied customer exploring new product categories, we've got you covered with our Tool Trial offer.

DMC Power will deliver Swage Tooling to your jobsite or facility, train your team and let you see for yourself – on your own LIVE project – the power of Swaging with this low risk commitment.

**ALL TOOLS QUALIFY FOR:**

FREE user training | 24/7 jobsite support | International shipping | Bulk discounts

Tooling is on the shelf and ready to ship - call **888-SWAGE-NOW** to place your order today!



# HYDRAULIC PUMPS

- Reservoir sight window to determine hydraulic oil level
- Various Hydraulic Hose and Hand Control options available
- Factory filled hydraulic oil reservoir
- Shipped safely in sturdy, wheeled case

## DLT12MAPE1001

### ELECTRIC HYDRAULIC PUMP

- Used with DLT45/58/65/85/86 Power Units
- Calibrated to stop at 10,000 psi
- Push button activation and automatic retraction
- 5/8 HP, 10,000 RPM motor
- 115V AC, 50/60 Hz
- 1.6 quart hydraulic fluid reservoir
- 7"L x 8"W x 14"H; 28 lbs
- Includes 10' push button hand control and 10' hydraulic hose with threaded connectors



## PLT115PLPE1001

### 2-STAGE HYDRAULIC PUMP

- Used with the PLT115 6" Bus tool only
- Calibrated to stop at 9,000 psi
- Manual control with advance, hold & retract settings
- 1/2 HP, 12,000 RPM motor
- 110/115V AC, 50/60 Hz
- 1/2 gallon hydraulic fluid reservoir
- 12"L x 10"W x 19"H; 42 lbs
- Includes 10' push button hand control and 10' hydraulic hose with threaded connectors



## DLT17MAPE1000

### GAS POWERED PUMP

- Used with all Power Units
- 2-Stage pump for rapid advance
- Calibrated to stop at 10,000 psi
- 5.5 HP Honda CHV-Type engine
- Includes protective roll cage
- 3 gallon hydraulic fluid reservoir
- 22"L x 20"W x 25"H; 154 lbs
- Includes 50' push button hand control and 50' hydraulic hose with threaded connectors

